

Lead  
Club

## EAST WIGHT COMBINED CLUBS REGATTA SERIES 2024

Supporting Club



**MOCRA SERIES**  
Sunday 12<sup>th</sup> May, Sunday 23<sup>rd</sup> June, Sunday 7<sup>th</sup> & 21<sup>st</sup>  
July, Sunday 4<sup>th</sup> August



**WASZP GP OPEN**

Saturday 25<sup>th</sup> & Sunday 26<sup>th</sup> May



**MOCRA NATIONAL CHAMPIONSHIPS**

Tuesday 11<sup>th</sup> to Thursday 13<sup>th</sup> June



**PRINCE PHILIP'S CUP**

Sunday 23<sup>rd</sup> June



**VICTORY CLASS 90TH ANNIVERSARY EASTERN  
SOLENT REGATTA**

Friday 28<sup>th</sup> to Sunday 30<sup>th</sup> June



**BHYC SPINNAKER REGATTA**

Saturday 20<sup>th</sup> July



**BEMBRIDGE VILLAGE DINGHY REGATTA**

Saturday 3<sup>rd</sup> August



**INTERNATIONAL OPTIMIST CLASS & RS TERA OPEN  
REGATTA**

Saturday 3<sup>rd</sup> August



**SVYC ILCA GRAND PRIX**

Sunday 4<sup>th</sup> August



**SVYC RACE WEEK**

Monday 5<sup>th</sup> to Wednesday 7<sup>th</sup> August



**BEMBRIDGE SAILING CLUB REGATTA**

Friday 9<sup>th</sup> and Saturday 10<sup>th</sup> August



**SEA VIEW YACHT CLUB REGATTA**

Sunday 11<sup>th</sup> and Monday 12<sup>th</sup> August



**J70 OPEN REGATTA**

Saturday 17<sup>th</sup> & Sunday 18<sup>th</sup> August



**BRADING HAVEN YACHT CLUB REGATTA**

*(Mermaid Gin Regatta)*



Saturday 24<sup>th</sup> & Sunday 25<sup>th</sup> August



**ROYAL VICTORIA YACHT CLUB REGATTA**

*(Merrydown Regatta)*



Sunday 29<sup>th</sup> September

## EAST WIGHT COMBINED CLUBS

[www.ewcc.online](http://www.ewcc.online)

President	Jeremy Spencer-Cooper
Chairman	Polly Schafer
Hon Secretary	Mike Samuelson ( <a href="mailto:mikesam06@gmail.com">mikesam06@gmail.com</a> )

<b>Bembridge Sailing Club</b> (01983-872237) <a href="http://bembridgesailingclub.org">bembridgesailingclub.org</a> <a href="mailto:sec@bembridgesailingclub.org">sec@bembridgesailingclub.org</a>	Commodore	Susie Beart
	Vice-Commodore	Nick-Rowton-Lee
	Rear-Commodores	Alastair Speare-Cole (Sailing) Sally Fowler (House) Christopher Halliday (Finance)
	Club Manager	Gemma Wall
	Sailing Manager	Laurence Blackburn
<b>Brading Haven Yacht Club</b> (01983-872289) <a href="http://bhyc.org.uk">bhyc.org.uk</a> <a href="mailto:secretary@bhyc.org.uk">secretary@bhyc.org.uk</a>	Commodore	Robin Lobb
	Vice-Commodore	Nigel Van Nuffelen
	Rear-Commodores	Chris Wilkinson (Offshore) Jan Baum (Onshore) Janet Snudden (Finance)
	Club Manager/Secretary	vacant
<b>Royal Victoria Yacht Club</b> (01983-882325) <a href="http://office@rvyc.org.uk">office@rvyc.org.uk</a>	Commodore	Helen Vrba
	Vice-Commodore & Rear Commodore (Sailing)	Jane Barrett Bellingham
	Rear-Commodores	Diana Bedford (House)
	Hon Secretary	Cathy Kerr
	Hon Treasurer	Chris Gear
<b>Sea View Yacht Club</b> (01983-613268) <a href="mailto:secretary@svyc.org.uk">secretary@svyc.org.uk</a> <a href="mailto:training@svyc.org.uk">training@svyc.org.uk</a>	Commodore	Richard Dobbs
	Vice-Commodore	Penny Lakin Mattinson
	Rear-Commodores	Jimbo Mitchell (Sailing) Guy Lawrence (House) Stephen Jones (Finance)
	Hon Treasurer	Simon Broxham
	Club Manager/Secretary	James Crofts
	Operations & Sailing Director	Jon Curtis

East Wight Combined Clubs exists as a Committee created jointly by Bembridge Sailing Club, Brading Haven Yacht Club, Royal Victoria Yacht Club and Sea View Yacht Club to co-ordinate the race management of keelboat and dinghy regattas organised by them in the Eastern Solent.

The Flag Officers of Bembridge Sailing Club, Brading Haven Yacht Club, Royal Victoria Yacht Club and Sea View Yacht Club invite all competitors and their supporters to be Associate Members and use the facilities of the Clubs during these Regattas.

## **ENTRY REQUIREMENTS FOR EAST WIGHT REGATTAS**

Entrants for any race in the East Wight Series must have signed a 2024 Entry Form which includes agreement to be bound by the "Risk Statement" in EWCC SI 22 and that they consent to their entry details being held by the organising Club in accordance with that Club's Data Protection policy (see "Privacy Statement" in EWCC SI 23).

Entrants for handicap races will additionally be required to provide information about their boat and either a YTC or MOCRA rating certificate for cruisers and multihulls or for dinghies a Portsmouth Yardstick number.

Entry Forms will be available on request through Class Secretaries or from the Club Secretaries/Club Managers of the respective Clubs.

The Entry Form for entrants under 18 **must** be endorsed by a parent/guardian.

The Club Annual Entry Forms available from BHYC, BSC, SVYC & RVYC are applicable for any race in the East Wight Series. The respective clubs will, on request, provide the Organising Authority with a list of helms/boats in the specified classes who have validly signed an Entry Form.

Entrants must also have paid the relevant entry fee, if any, prior to any race they enter.

Keelboats that appear in the vicinity of the Starting Line prior to their Preparatory Signal will be considered as Starters, provided they have complied with these entry requirements.

*In addition to complying with these entry requirements, entrants in centreboard dinghies (including small multihulls) must sign the Sign-On Sheet for each race/event in which they compete in accordance with the requirements of the REGISTRATION & BRIEFING section of the relevant Notice of Race.*

Clubs of the EWCC implement the RYA Racing Charter and competitors will be required to undertake to sail in compliance with the Charter, which can be found at the front of the RYA rule book (Racing Rules of Sailing 2021-2024) or at:  
<https://www.rya.org.uk/racing/rules/racing-charter>

In addition to the events included in this programme, some clubs will be running events to support the RYA 'Discover Sailing'. Additionally, supporting "Barts Bash" on Saturday or Sunday 14<sup>th</sup>/15<sup>th</sup> September as well as events in support of RNLI 200 ("All Hands on Deck").

## **NOTICES OF RACE & SAILING INSTRUCTIONS**

Notices of Race and Sailing Instructions and Conditions of Entry can be downloaded from the EWCC website ([www.ewcc.online](http://www.ewcc.online)) except for the following events which, whilst part of the East Wight Regatta Series, are governed by the Class Rules of their National Authority and will be issued separately; they can also be obtained from the organising Club or downloaded as shown below.

<i>EVENT</i>	<i>CLUB</i>	<i>WEBSITE</i>
WASZP GP Open	<b>RVYC</b>	<a href="https://racehub.waszp.com/eventdetail/324">https://racehub.waszp.com/eventdetail/324</a>
Prince Philip's Cup	<b>SVYC</b>	<a href="http://www.svy.org.uk">www.svy.org.uk</a>
IW Youth & Junior Dinghy Championships	<b>BHYC</b> <b>RVYC</b>	<a href="http://www.bhyc.org.uk">www.bhyc.org.uk</a> <a href="http://www.rvyc.org.uk">www.rvyc.org.uk</a> <a href="http://www.iwyouthdinghychampionships.co.uk">www.iwyouthdinghychampionships.co.uk</a>

## 2024 COURSES AND OTHER OPEN EVENTS

<i>Date</i>	<i>Courses</i>	<i>Host club(s)</i>	<i>Open events</i>	<i>Host club(s)</i>
28 Apr	ICC Sail & Power Exams	SVYC		
2 May			SVYC v BHYC	SVYC
7 May	1 <sup>st</sup> Aid Course	SVYC		
16 May			SVYC v RVYC	SVYC
31 May	1 <sup>st</sup> Aid Course	BSC		
5 Jun	PB Instructor Skills Test	SVYC		
6 to 8 Jun	PB Instructors course	SVYC		
11 Jun	Pre-Entry Dinghy Instrs	SVYC		
12 to 16 Jun	DI course	SVYC		
19 Jun	Pre-Entry Dinghy Instrs	SVYC	Prince Philip's Cup	SVYC
19 Jun	PB Instructor Skills Test	SVYC		
19 to 23 Jun	DI Course	SVYC		
20 Jun			SVYC v BHYC v RVYC v RSoLYC	SVYC
20 to 22 Jun	PB Instructors course	SVYC		
25 Jun	VHF Exam	SVYC		
26 to 29 Jun	SI course	SVYC		
2 Jul	Pre-Entry Dinghy Instructors	SVYC		
3 Jul	PB Instructors Skills Test	SVYC		
3 to 7 Jul	DI course	SVYC		
4 to 6 Jul	PB Instructors course	SVYC		
2 Jul			Onboard Festival at SVYC	SVYC
9 Jul	Pre-Entry Dinghy Instrs	SVYC		
10 & 11 Jul	DI Multihull endorsement	SVYC		
10 to 14 Jul	DI course	SVYC		
12 Jul	Racing Instr Endorsement	SVYC		
13 & 14 Jul	Adv Instr endorsement	SVYC		
15 Jul	1 <sup>st</sup> Aid Course	BSC		
16 Jul	SRC Course	BSC		
16 Jul	Pre-Entry Keelb & 1 <sup>st</sup> Aid	SVYC		
17 to 21 Jul	Keelboat Instrs course	SVYC		
20 & 21 Jul	DI Keelboat endorsement	SVYC		
10 Aug			Scow Parade	BSC
28 Aug	SRC Course			BSC
14 or 15 Sep			Bart's Bash	All clubs
24 Sep	1 <sup>st</sup> Aid Course	SVYC		
2 to 6 Oct	Shorebased Nav course	SVYC		
24 Oct	SRC Course	BSC		

# RVYC MOCRA OPEN SERIES 2024

## NOTICE OF RACE

### **ORGANISATION**

This event is part of the East Wight Combined Club's series. The Organising Authority will be RVYC.

### **CONDITIONS OF ENTRY & ENTRY FEE**

Entrants must complete and return to the RVYC a 2024 Entry Form available from the RVYC website (or by e mail: office@rvyc.org.uk) before racing (www.rvyc.org.uk). This will include agreement to be bound to the "Risk Statement" in EWCC SI 22 and the "Privacy Statement" in EWCC SI 23 which can be downloaded from <https://www.ewcc.online>.

There is no entry fee.

All boats shall have a valid 2024 MOCRA Rating Certificate.

### **REGISTRATION & BRIEFING**

Registration will be by radio (VHF Ch. M1) to the RVYC Race Officer (call sign: VIC Race Officer) once entrants are in the vicinity of the race course.

There will be no briefing.

### **SAILING INSTRUCTIONS**

Races shall be governed by the World Sailing Racing Rules of Sailing 2021 - 2024, RYA Prescriptions, MOCRA Rules, this Notice of Race and the Sailing Instructions. RVYC SIs will apply as varied by this Notice of Race. SI's can be downloaded from the RVYC website.

Unless modified by the RO before racing the Class Flag **M (MOCRA)** will be used 5 minutes prior to the start time.

### **PROGRAMME OF EVENTS**

Date	HW ( <i>Portsmouth</i> )	Timings	Events
<b>12<sup>th</sup> May</b>	HW 15:31 (4.4m)	Start 14:00	Race 1
<b>23<sup>rd</sup> June</b>	HW 13:33 (4.5m)	Start 11:30	Race 2
<b>7<sup>th</sup> July</b>	HW 13:27 (4.5m)	Start 12:00	Race 3
<b>21<sup>st</sup> July</b>	HW 12:26 (4.5m)	Start 11:00	Race 4
<b>4<sup>th</sup> August</b>	HW 14:29 (4.4m)	Start 11:00	Race 5

### **SAILS, EQUIPMENT CHECKS & SAFETY**

Boats shall comply with the current World Sailing Special Regulations for Category 4 races, except that regulations 3.13.1 (crash bulkheads), 3.15.2(c) and (d) (netting triangles), 3.14.4(c) (trimaran outrigger lines) and 3.14.4(d) (lifelines on catamarans) shall not apply. Spot checks to establish conformity with Class Rules may be made at the direction of the Race Committee before, during or after the series.

### **INSURANCE**

Each participating boat shall be insured with valid third-party liability insurance with a minimum cover of £2,000,000.

### **COURSES & RACE FORMAT**

The race course will be in the central and eastern Solent, between W Ryde Middle Buoy to the West and Kemps Quay buoy to the East. All racing marks will be on the 2024 RVYC Race Chart which can be downloaded from the RVYC website.

All races may be run as an Average Lap format at the discretion of the Duty Race Officer. For these races, competitors are required to repeat the course as notified to include the start/finish line at the end of each lap. Competitors will finish when the shortened course flag is displayed as they cross the start/finish line (irrespective of the number of laps completed). Clarification if necessary will be provided on VHF Ch M1.

**STARTING**

The start line will either use the RVYC race box, or a committee boat on the defined race course area.

Races will be started in accordance with RRS 26.

**EXONERATION PENALTY, ADVISORY HEARING & RYA ARBITRATION**

The exoneration Penalty and Advisory Hearing & RYA Arbitration of the RYA Rules Disputes Procedures will be available.

**SCORING**

Low Point Scoring System (RRS Appendix A) will apply. There will be one discard if 4 or more races are completed.

**PRIZES**

Providing there are sufficient entries, a trophy (provided by RVYC) will be awarded to the winner of the series, and will be presented at the MOCRA AGM and/or prize giving.

**COMMUNICATIONS**

Race Information - Ch M1; Race Management - M2;

**BERTHING**

Berthing can be arranged the night before, and/or after by contacting the RVYC Office.

**MEALS**

The RVYC bar and galley will be open at the times advertised on the website.

Jane Barrett Bellingham  
Vice Commodore, RVYC

Nigel Talbot  
for MOCRA

# EWCC MOCRA NATIONAL CHAMPIONSHIPS 2024

Tuesday 11<sup>th</sup> June to Thursday 13<sup>th</sup> June

## NOTICE OF RACE

### ORGANISATION

This event is part of the East Wight Combined Club's series. The Organising Authority will be RVYC with support and assistance from BSC.

### CONDITIONS OF ENTRY & ENTRY FEE

The Entry Requirements on page 2 of this programme, which includes agreement to be bound by the "Risk Statement" in EWCC SI 22 and the "Privacy Statement" in EWCC SI 23, apply. Both can be downloaded from <https://www.ewcc.online>. The Entry Form will be available from RVYC & BSC and must have been returned to the Rear Commodore (Sailing) RVYC by 1<sup>st</sup> June along with the Entry Fee of £100.00. There will be a surcharge of £20.00 for late entries received after 17:00 on 1<sup>st</sup> June.

All boats shall have a valid 2024 MOCRA Rating Certificate.

### REGISTRATION & BRIEFING

Registration and a briefing will be held at RVYC [www.rvyc.org.uk](http://www.rvyc.org.uk) on Monday evening 10<sup>th</sup> June at 18:30. Boats arriving on Tuesday morning prior to Race 1 must report in to the Committee Boat (SEA BREEZE) on arrival off RVYC Race box (**Ch 77**).

### SAILING INSTRUCTIONS

Races shall be governed by the World Sailing Racing Rules of Sailing 2021-2024, RYA Prescriptions, MOCRA Rules, this Notice of Race and the Sailing Instructions. EWCC SIs will apply as varied by this Notice of Race. SIs can be downloaded from <https://www.ewcc.online>

The following Class Flags will be used: MOCRA - **M**

### PROGRAMME OF EVENTS

<i>Date &amp; HW (Portsmouth)</i>		<i>Timings</i>	<i>Events</i>
<b>Mon 10<sup>th</sup> Jun</b>	HW 15:16 (4.4m)	On arrival	Registration
		18:30	Briefing & Supper for those who are available
<b>Tue 11<sup>th</sup> Jun</b>	HW 03:11 (4.3m) LW 08:40 (1.3m) HW 16:00 (4.3m)	11:00	MOCRA Race 1 (c 60 mins) - windward/leeward
		oc	MOCRA Race 2 (c 90 mins) - triangle, sausage, triangle
		14:30	MOCRA Race 3 (c 2 hours) - longer distance
		oc	To RVYC pontoons/moorings
		20:00	Supper
<b>Wed 12<sup>th</sup> Jun</b>	HW 02:56 (4.1m) LW 09:26 (1.5m) HW 16:44 (4.2m)	10:00	MOCRA Race 4 (c 45 mins) - windward/leeward
		oc	MOCRA Race 5 to Bembridge (3-4 hours)
		oc 20:00	To Bembridge Harbour pontoons/beach Supper
<b>Thr 13<sup>th</sup> Jun</b>	HW 04:43 (3.9m) LW 10:16 (1.6m) HW 17:29 (4.1m)	11:00	MOCRA Race 6 (c 60 mins) - windward/leeward
		oc	MOCRA Race 7 (c 90 mins) - triangle, sausage, triangle
		14:30	MOCRA Race 8 (c 2 hours) - windward/leeward
		oc	To Bembridge Harbour pontoons/beach
		20:00	Championship/Regatta Dinner

### SAILS, EQUIPMENT CHECKS & SAFETY

Boats shall comply with the current World Sailing Special Regulations for Category 4 races, except that regulations 3.13.1 (crash bulkheads), 3.15.2(c) and (d) (netting triangles), 3.14.4(c) (trimaran outrigger lines) and 3.14.4(d) (lifelines on catamarans) shall not apply. Spot checks to establish

conformity with Class Rules may be made at the direction of the Race Committee before, during or after the Regatta.

### ***COURSES & RACE FORMAT***

A list of all likely marks with GPS co-ordinates will be e-mailed to competitors separately; inflatable marks may be used. EWCC Special Courses 1, 5 or 6 may be used. When racing off Bembridge, Boats shall not pass between St Helens Fort and Nodes Point during racing.

Where appropriate, scoring races will be run as an Average Lap format for MOCRA boats. For these races, competitors are required to repeat the course as notified to include the start/finish line at the end of each lap. Competitors will finish when the shortened course flag is displayed as they cross the start/finish line (irrespective of the number of laps completed). Clarification if necessary will be provided on VHF Ch 77.

### ***STARTING***

Races will be started in accordance with RRS 26 modified so that the Warning Signal for each MOCRA start shall be displayed 10 mins before the Start; the Preparatory Signal will be displayed 4 mins before the Start.

### ***TIME LIMITS***

In addition to the time limits in EWCC SI 14, there will be an additional time limit of 1 hour to reach the first mark. EWCC SI 14.1 is changed to 5 hours for Race 5.

### ***EXONERATION PENALTY, ADVISORY HEARING & RYA ARBITRATION***

The exoneration Penalty and Advisory Hearing & RYA Arbitration of the RYA Rules Disputes Procedures will be available. This extends SI 15.

### ***SCORING***

Low Point Scoring System (RRS Appendix A) will apply. Three races will constitute a Series. There will be one discard if 5 races are completed and two discards if all 8 races are completed.

### ***PRIZES***

MOCRA National Championship Trophies will be presented at the MOCRA AGM & Dinner later in the year. Prizes for the winners of each race will be presented at the Championship Dinner on 13<sup>th</sup> June.

### ***COMMUNICATIONS***

Race Information - Ch 77; Race Management - M2; Bembridge Harbour/Marina - Ch 80

### ***BERTHING***

Berthing requirements at RVYC must be indicated on the Entry Form; although bookings for Bembridge Harbour must be made direct with the Harbour Company as soon as possible - quote MOCRA Nationals - please also note for information your requirements on the Entry Form. In the event that alongside berthing in Bembridge harbour is not available at the time of booking, a mooring either at Seaview or Under Tyne will be available. Please e-mail [laurence@bembridgesailingclub.org](mailto:laurence@bembridgesailingclub.org) to discuss further.

### ***MEALS***

Meal requirements for the Regatta should be entered on the back of the Entry Form. These must be confirmed and paid for prior to arrival at RVYC and BSC.

### ***CANCELLATION/REFUNDS***

Entry Fee, Berthing at RVYC & Meals in full if cancelled a week before the start of the Championships. 50% up to 3 days before and 0% if cancelled within the final 72 hours.

Jane Barrett-Bellingham  
Rear Commodore (Sailing) RVYC

Alastair Speare-Cole  
Rear Commodore (Sailing), BSC



# VICTORY CLASS 90TH ANNIVERSARY EASTERN SOLENT REGATTA

Friday 28<sup>th</sup> to Sunday 30<sup>th</sup> June

## NOTICE OF RACE

<i>HIGH &amp; LOW WATER PORTSMOUTH (BST)</i>		
	HW	LW
Friday 28 <sup>th</sup> June	17:39 (4.4m)	10:22 (1.2m)
Saturday 29 <sup>th</sup> June	18:38 (4.3m)	11:23 (1.3m)
Sunday 30 <sup>th</sup> June	07:01 (4.1m)	12:27 (1.4m)

### ORGANISATION

This event is organised as part of the East Wight Combined Clubs' Series. The Organising Authorities are SVYC and BSC.

### ELIGIBILITY & ENTRY

Helms must be members of an affiliated RYA Club. The Entry Requirements on page 2 of this programme, which includes agreement to be bound by the "Risk Statement" in EWCC SI 22 and the "Privacy Statement" in EWCC SI 23, apply. There is no Entry Fee.

### REGISTRATION & BRIEFING

Visiting boats may sign on by VHF radio to 'Seaview Deck' for Saturday morning's race and 'Sea Breeze' for Saturday afternoon's race no later than 20 minutes before their start. There will not be a briefing.

### RULES & SAILING INSTRUCTIONS

Races shall be governed by the World Sailing Racing Rules of Sailing 2021-2024. Races will be sailed under the East Wight Sailing Instructions (which can be downloaded from <https://www.ewcc.online>) as varied by this Notice of Race, Protest forms must be lodged with the Race Officer within 1 hour of the completion of the race. EWCC Sailing Instructions are varied in that RRS 44.1 is changed so that the Two-Turns Penalty is replaced by the One-Turn Penalty (a tack and a gybe). EWCC SI 8.5 (passing through the line after starting) does not apply for Saturday morning's race.

### SVYC CLUB START/FINISH LINE

The **Orange starting line** is an extension of a line formed by bringing the SVYC flagstaff in line with an orange and white vertical marker board on the wall of the SVYC building. The Yellow Post is on an extension of this line. When starting, boats (except Cruisers & Foiling Boats) must pass between two yellow buoys marking the outer and inner limits of the line, for Cruisers & Foiling Boats the inner and outer limit marks will be inflatables placed on the seaward side of the Yellow Post. When code flag E is displayed at the warning signal the inner limit mark does not apply. If no starting line board is displayed, the Orange Starting Line will be used.



If a limit mark is lying on the pre-start side of the starting line, boats when starting shall leave on the required side both the limit mark and the point on the starting line nearest to the limit mark.

The Green starting line is a line formed between the SVYC flagstaff and a green-topped outer limit Inflatable mark. There will also be an inner limit inflatable mark laid approximately on the line unless Flag E is displayed at the Warning signal, when there will not be an inner limit mark.

The Club finishing line is an extension of a line formed by bringing the SVYC flagstaff in line with an orange and white vertical marker board on the wall of the SVYC building. The Yellow Post is on an extension of this line. When finishing, all Keelboat classes must pass between the two yellow

buoys marking the outer and inner limits of the line; all Dinghy classes must pass between the SVYC flagstaff and the Yellow outer distance mark. All Cruisers & Foiling Boats must pass between the inner and outer limit marks which will be inflatables placed on the seaward side of the Yellow post. If a White 10 on a black background is displayed Number 10 buoy becomes the outer limit mark for the finish. If a Limit mark is lying beyond the Finishing line, boats when finishing shall leave on the required side both the Limit mark and the point on the finishing line nearest to the Limit mark.

**SHORTEN COURSE** - A race may be shortened from ashore when the Club Finishing line is a specified mark of the course. Shortened course will be signalled by displaying Flag S from ashore with two sound signals. In any race, the course may be shortened at a rounding mark. Boats should finish between the mark & the staff displaying Flag S.

### **COURSES**

The course to be sailed will be displayed no later than four minutes prior to the Warning signal. EWCC SI 8.5 (boats not to pass through the start/finish line) shall not apply for Saturday morning's race.

### **PROGRAMME OF EVENTS**

<i>Date</i>	<i>Timings</i>	<i>Events</i>
<b>Fri 28<sup>th</sup> Jun</b>	14:00	Victory Passage race to SVYC
	18:30	Supper at SVYC
<b>Sat 29<sup>th</sup> Jun</b>	11:00	Victory Race 1
	12:00	Victory Race 2 to Under Tyne moorings
	13:15	Victory Race 3
	15:00	To Under Tyne moorings
	19:30	Supper at BSC
<b>Sun 30<sup>th</sup> Jun</b>	10:00	Depart BSC to Under Tyne moorings
	11:00	Victory Class Passage race to Portsmouth

### **SAILS & EQUIPMENT CHECKS**

Spot checks to establish conformity with Class Rules may be made at the direction of the Race Committee before, during or after the Regatta. All competitors in centreboard dinghies, small multihulls, and foiling boats, and those required to do so under class rules, shall wear adequate personal flotation devices at all times while afloat except briefly while changing or adjusting clothing or personal equipment. Support boats are governed by EWCC SI 18.1 at all times.

**SCORING SYSTEM & RESULTS** - The Low Point Scoring System (RRS Appendix A) will apply. Results will be posted on the Notice Board at SVYC as soon as possible after each race and will also be available at [www.halsail.com/result/club/1666](http://www.halsail.com/result/club/1666)

### **CANCELLATION/REFUNDS**

Any mooring charges & Meals will be refunded in full if cancelled a week before the start of the weekend. 50% up to 3 days before and 0% if cancelled within the final 72 hours.

### **PRIZES**

Prizes for first, second and third in each race, depending on the number of entrants, will be presented at a prizegiving to be held during the supper at the BSC on Saturday 29<sup>th</sup> June.

Jimbo Mitchell  
Rear Commodore (Sailing) SVYC

Alastair Speare-Cole  
Rear Commodore (Sailing) BSC

# SOLENT SCOW CHAMPIONSHIP

Saturday 20<sup>th</sup> July

## NOTICE OF RACE

<i>HIGH &amp; LOW WATER PORTSMOUTH (BST)</i>		
	HW	LW
Saturday 20 <sup>th</sup> July	11:46 (4.3m)	16:49 (1.4m)

### **ORGANISATION**

This event is part of the East Wight Combined Clubs' Series. The Organising Authority will be BSC with race management assistance provided by BHYC.

### **ELIGIBILITY & ENTRY**

**Helms must be members of an affiliated RYA Club.** The Entry Requirements on page 2 of this programme, which includes agreement to be bound by the "Risk Statement" in EWCC SI 22 and the "Privacy Statement" in EWCC SI 23, apply. There is no Entry Fee.

### **REGISTRATION & BRIEFING**

In addition to complying with the entry requirements, entrants **must sign the Sign-On Sheet at BSC or BHYC at least 30 minutes before the scheduled race start time.** Failure to do so will result in the boat not being recognised as racing. There will not be a briefing.

### **RULES & SAILING INSTRUCTIONS**

Races shall be governed by the World Sailing Racing Rules of Sailing 2021-2024, RYA Prescriptions, Class Rules, this Notice of Race and the Sailing Instructions. Races will be sailed under the East Wight Sailing Instructions, as varied by this Notice of Race. They can be downloaded from <https://www.ewcc.online> Class flags are as shown below. Races will be started in accordance with RRS 26. Rule 44.1 is changed so that the Two-turns Penalty is replaced by a One-turn Penalty.

### **PROGRAMME OF EVENTS**

Date	Race	Flag	Start
Saturday 20 <sup>th</sup> July	Race 1	7	10:00
	Race 2	7	As soon as possible after Race 1

### **COURSES**

Courses will be in vicinity of St Helens Fort.

### **SAILS & EQUIPMENT CHECKS**

Spot checks to establish conformity with Class Rules may be made at the direction of the Race Committee before, during or after the Regatta.

**SUPPORT BOATS** - these are welcome but are governed by EWCC SI 18.1 unless required to rescue a boat in trouble.

**SCORING SYSTEM** - the Low Point Scoring System (RRS Appendix A) will apply. No discard.

**RESULTS** - results will be posted on the Notice Board at BSC & BHYC after racing.

**PRIZES** - prize giving to which all competitors are encouraged to attend will be held at BSC on Saturday 20<sup>th</sup> July at 18:00. The following prizes will be awarded:

**1st Prize Overall** - Solent Scow Championship Cup and a prize

**Scows 2nd & 3rd** - a prize each

**1st Under 18 Helm** - a prize

Alastair Speare-Cole  
Rear Commodore (Sailing) BSC

Chris Wilkinson  
Rear Commodore (Offshore) BHYC

# BHYC SPINNAKER REGATTA

Saturday 20<sup>th</sup> July

## NOTICE OF RACE

<i>HIGH &amp; LOW WATER PORTSMOUTH (BST)</i>		
	HW	LW
Saturday 20 <sup>th</sup> July	11:46 (4.3m)	16:55 (1.4m)

### **ORGANISATION**

This event is part of the East Wight Combined Clubs' Series. The Organising Authority will be BHYC.

### **ELIGIBILITY & ENTRY**

**Helms must be members of an affiliated RYA Club.** The Entry Requirements on page 2 of this programme, which includes agreement to be bound by the "Risk Statement" in EWCC SI 22 and the "Privacy Statement" in EWCC SI 23, apply. The event is open to all boats with a Spinnaker and any that have been invited by the Organising Authority. There may be a small Entry Fee to cover the costs of prizes.

### **REGISTRATION & BRIEFING**

Entrants are asked to sign on at BHYC before going afloat, however failure to do so shall not result in disqualification. There will not necessarily be a briefing.

### **RULES & SAILING INSTRUCTIONS**

Races shall be governed by the World Sailing Racing Rules of Sailing 2021-2024, RYA Prescriptions, Class Rules, this Notice of Race and the Sailing Instructions. Races will be sailed under the East Wight Sailing Instructions, as varied by this Notice of Race. They can be downloaded from <https://www.ewcc.online>.

EWCC SI 8.5 is deleted; there will not be any penalty for sailing through a start line. RRS 26 is modified in that the Start sequence will be a 3 minute sequence as follows:

T-6 mins	T-5 mins	T-4 mins	T-3 mins	T-2 mins	T-1 mins	T-0 mins
Slow boats Class flag displayed	Slow boats Prep flag displayed	Slow boats Prep flag removed	Slow boats Start; Fast boats Class flag displayed	Fast boats Prep flag displayed	Fast boats Prep flag removed	Fast boats Start

Slow boats are those that would normally sail in the Slow Handicap (i.e Mirror, Feva, Swan (PY1240 and over). At the Race Officers discretion some boats may be asked to start with the Slow Boats to facilitate a faster turn around between races.

### **PROGRAMME OF EVENTS**

Date	Race	Flag	Race
Saturday 20 <sup>th</sup> July	10:27	4	Warning Flag Race 1 Slow Boats
	11:00	3	Warning Flag Race 1 Fast Boats
			Races 2 to 7 to follow asap. No Warning Flag race to be displayed after 13:00

**COURSES** - the race area will be outside the harbour with a Committee Boat start. The courses will be either:

- Windward/Leeward with buoys and rounds shown on the stern of the Committee Boat.
- Triangle with buoys and rounds on the stern of the Committee Boat
- Special Course 1 (triangle, sausage, triangle - see EWCC Appendix 1.

### **SAILS & EQUIPMENT CHECKS**

Spot checks to establish conformity with Class Rules may be made at the direction of the Race Committee before, during or after the Regatta.

**SUPPORT BOATS** - these are welcome but are governed by EWCC SI 18.1 unless required to rescue a boat in trouble.

**SCORING SYSTEM** - Results of the Fast and Slow will be combined to give an overall result. One race is required to be completed to constitute a series:

- a. When fewer than 3 races are completed, a boat series score shall be the total of her race series;
- b. When 3 or more races have been completed, a boats series score shall be the total of her race scores excluding her worse score.
- c. When 6 or more races have been completed, a boats series score shall be the total of her race scores excluding her 2 worst scores.

**RESULTS** - results will be posted on the Notice Board at BSC & BHYC after racing.

**PRIZES** - prizes will be awarded for the 1<sup>st</sup> Asymmetric and 1<sup>st</sup> Symmetric spinnaker. Prizes will also be awarded to the winner of any Class that musters 4 or more entrants, and other prizes at the discretion of the Organising Authority.

Prizegiving will be held at BHYC as soon as possible after the racing.

Chris Wilkinson  
Rear Commodore (Offshore) BHYC

Tony Burton  
Captain of Racing BHYC

# BEMBRIDGE VILLAGE DINGHY REGATTA

Saturday 3<sup>rd</sup> August 2024

## NOTICE OF RACE

<i>HIGH &amp; LOW WATER PORTSMOUTH (BST)</i>		
	HW	LW
Saturday 3 <sup>rd</sup> August 24	11:51 (4.3m)	17:00 (1.3m)

### ORGANISATION

This event is part of the East Wight Combined Clubs' Series. The Organising Authority will be BSC with race management assistance provided by BHYC.

### ELIGIBILITY & ENTRY

Helms must be members of an affiliated RYA Club. The Entry Requirements on page 2 of this programme, which includes agreement to be bound by the "Risk Statement" in EWCC SI 22 and the "Privacy Statement" in EWCC SI 23, apply. There is no Entry Fee.

### REGISTRATION & BRIEFING

In addition to complying with the entry requirements, entrants in centreboard dinghies (incl multihulls) **must sign the Sign-On Sheet for their class at BSC, BHYC or SVYC at least 30 minutes before the scheduled race start time.** Failure to do so will result in the boat not being recognised as racing. PYs for entrants in Dinghy Class Races 3 & 6 **MUST** be entered on the appropriate Sign-On Sheet. There will not be a briefing.

### RULES & SAILING INSTRUCTIONS

Races shall be governed by the World Sailing Racing Rules of Sailing 2021-2024, RYA Prescriptions, Class Rules, this Notice of Race and the Sailing Instructions. Races will be sailed under the East Wight Sailing Instructions, as varied by this Notice of Race. They can be downloaded from <https://www.ewcc.online>

Class flags are as shown below. Races will be started in accordance with RRS 26. Rule 44.1 is changed so that the Two-turns Penalty is replaced by a One-turn Penalty.

### PROGRAMME OF EVENTS

Dinghy Classes			
Race	Class	Flag	Sat 3 <sup>rd</sup> Aug (Start)
1	International Optimist & RS Tera	O	11:00
2	Solent Scow	7	11:05
3	Dinghy Slow Handicap (PY 1240 and over)	4	11:10
4	ILCA 4 (4.7)	V	11:15
5	RS Feva	F	11:20
6	Dinghy Fast Handicap (under PY 1240)	3	11:25

**STARTS** - Races will start from a Committee Boat located in the area between the entrance to Bembridge Harbour and either Garland or Priory Bay depending on the wind direction.

**SAILS & EQUIPMENT CHECKS** - Spot checks to establish conformity with Class Rules may be made at the discretion of the Race Committee before, during or after the Regatta.

**SUPPORT BOATS** - These are welcome but are governed by EWCC SI 18.1.

**SCORING SYSTEM** - The Low Point Scoring System (RRS Appendix A) will apply.

**RESULTS** - Results will be posted on the Notice Board at BSC (and e-mailed to BHYC & SVYC) as soon as possible after the day's racing.

**PRIZES** - Prize giving to which all competitors are encouraged to attend, will be held at BSC at **15:00** hours on Saturday 3<sup>rd</sup> August. Depending on the number of entries in each class, prizes for 1<sup>st</sup>, 2<sup>nd</sup> and 3<sup>rd</sup> will be awarded.

Race	<b>DINGHY CLASSES</b>	<i>Saturday 3<sup>rd</sup> Aug</i>
1	Optimist & RS Tera	Queen Elizabeth II Cup
2	Solent Scow	Ocamore Cup
3	Dinghy Slow Handicap (PY 1240 and over)	Vivian Lloyd Cup
4	ILCA 4 (4.7)	A prize
5	RS Feva	A prize
6	Dinghy Fast Handicap (Under PY 1240)	Hodgekinson Trophy

Alastair Speare-Cole  
Rear Commodore (Sailing) BSC

Laurence Blackburn  
Sailing Manager

# INTERNATIONAL OPTIMIST CLASS & RS TERA OPEN REGATTA

Saturday 3<sup>rd</sup> August

## NOTICE OF RACE

<i>HIGH &amp; LOW WATER PORTSMOUTH (BST)</i>		
	HW	LW
Saturday 3 <sup>rd</sup> August	11:51 (4.3m)	17:00 (1.4m)

### **ORGANISATION**

This event is part of the EWCC's Series. The Organising Authority will be SVYC.

### **ELIGIBILITY & ENTRY**

Helms must be members of an affiliated RYA Club. The Entry Requirements on page 2 of this programme, which includes agreement to be bound by the "Risk Statement" in EWCC SI 22 and the "Privacy Statement" in EWCC SI 23, apply. There is no Entry Fee.

### **REGISTRATION & BRIEFING**

In addition to complying with the entry requirements, **entrants must enter the Regatta by filling out the online entry form at <http://www.svyc.org.uk/enter> before 09:30 on Saturday 3<sup>rd</sup> August** (which will open one week before the event). Failure to do so will result in the boat not being recognised as racing.

### **RULES & SAILING INSTRUCTIONS**

Races shall be governed by the World Sailing Racing Rules of Sailing 2021-2024. Races will be sailed under the East Wight Sailing Instructions, as varied by this Notice of Race. They can be downloaded from <https://www.ewcc.online>

Protests must be notified to the Race Officer immediately after each race. Protest forms must be lodged with the Race Officer within 2 hours of the completion of racing. Rule 44.1 is changed so that the Two-turns Penalty is replaced by a One-turn Penalty. EWCC SI 8.5 (passing through the line after starting will not apply).

### **PROGRAMME OF EVENTS**

		Flag	Start
Saturday 3 <sup>rd</sup> August	Registration & Briefing at SVYC & BSC		10:00
	Race 1	O	11:30
	Race 2	O	oc
	Race 3	O	oc

### **COURSES**

Racing will be from a Committee Boat. The position of the Committee Boat and the course to be used will be issued at the briefing.

**SAILS & EQUIPMENT CHECKS** - Spot checks to establish conformity with Class Rules may be made at the direction of the Race Committee before, during or after the Regatta.

**SAFETY** - When the race committee considers that a boat or a competitor is in difficulty, it may instruct the boat or competitor to accept outside help, retire and sail ashore.

**SUPPORT BOATS** - are welcome but should not interfere with the racing unless required to rescue a boat in trouble.

**SCORING SYSTEM** - The Low Point Scoring System (RRS Appendix A) will apply. There will be one discard allowed if all 3 races per fleet are sailed, none if only 2 are sailed.

**RESULTS** - will be posted on the Notice Board at the SVYC as soon as possible after the day's racing.

**PRIZES** - Prizes will be presented at SVYC on the day of the race at 18:00 or on completion of racing. All competitors are encouraged to attend.



**BOAT PARKING AND ACCESS** - boat parking is available in SVYC's Duver Dinghy Park. Launching ramps are located at the Duver Dinghy Park, SVYC concrete slipway and the Halland slipway.

Jimbo Mitchell - Rear Commodore (Sailing) SVYC

Jon Curtis - Sailing Director SVYC

# SVYC ISLE OF WIGHT ILCA (LASER) GRAND PRIX

Sunday 4<sup>th</sup> August

## NOTICE OF RACE

<i>HIGH &amp; LOW WATER PORTSMOUTH (BST)</i>		
	HW	LW
Sunday 4 <sup>th</sup> August	12:29 (4.4m)	17:44 (1.2m)

### **ORGANISATION**

This event is part of the EWCC's Series and the ILCA South Coast Grand Prix series. The Organising Authority will be SVYC.

### **ELIGIBILITY & ENTRY**

Helms must be members of an affiliated RYA Club. The Entry Requirements on page 2 of this programme, which includes agreement to be bound by the "Risk Statement" in EWCC SI 22 and the "Privacy Statement" in EWCC SI 23, apply. The event is open to ILCA 4, 6 and 7 class boats only.

In addition to complying with the entry requirements, **entrants must enter the Regatta by filling out the online entry form at <http://www.svyc.org.uk/enter> before 09:30 on Sunday 4<sup>th</sup> August** The entry fee for all competitors will be £5.00 and must be paid when entering. Failure to do so will result in the boat not being recognised as racing. The Rig size must be included on the entry form and the same Rig is to be used in each race. The Race Committee intends to open entry approximately 1 month before the event.

### **RULES & SAILING INSTRUCTIONS**

Races shall be governed by the World Sailing Racing Rules of Sailing 2021-2024. Races will be sailed under the East Wight Sailing Instructions, as varied by this Notice of Race. They can be downloaded from <https://www.ewcc.online>. SI Addendum A will include the course and other details, and will be published on the SVYC website no less than 24 hours before the first race.

Protests must be notified to the Race Officer immediately after each race. Protest forms must be lodged with the Race Officer within 45 minutes of the completion of racing. Rule 44.1 is changed so that the Two-turns Penalty is replaced by a One-turn Penalty. EWCC SI 4.2 is changed such that the Warning signal will be made not less than 30 minutes after the removal of AP from ashore. EWCC SI 8.5 (passing through the line after starting) does not apply.

### **PROGRAMME OF EVENTS**

		Flag	Start
Sunday 4 <sup>th</sup> August	Briefing at SVYC		09:30
	Race 1 (All rigs)	NP1	11:00
	Race 2 (All rigs)	NP1	oc
	Race 3 (All rigs)	NP1	oc
	Race 4 (All rigs)	NP1	oc

No Warning signal will be made after 14:00

**COURSES** - Racing will be from a Committee Boat. The Racing area and Course will be published in the SI Addendum A.

**EQUIPMENT CHECKS** - Spot checks to establish conformity with Class Rules may be made at the direction of the Race Committee before, during or after the Regatta.

**RADIO COMMUNICATION** - A boat shall neither make radio transmissions while racing nor receive radio communications not available to all boats. This restriction also applies to mobile telephones and other similar devices.

**SUPPORT BOATS** - are welcome but should not interfere with the racing unless required to rescue a boat in trouble. All Support boats are governed by EWCC SI 18.

**SCORING SYSTEM** - The Low Point Scoring System (RRS Appendix A) will apply. There will be one discard allowed if all 4 races per fleet are sailed, none if only 3 are sailed.

**RESULTS** - will be posted on the Notice Board at the SVYC as soon as possible after the day's racing and may be available online.

**PRIZES** - Prizes for the leading boat in each rig, and the overall winner will be presented at SVYC immediately on completion of racing. All competitors are encouraged to attend.

**BOAT PARKING AND ACCESS** - boat parking is available in SVYC's Duver Dinghy Park. Launching ramps are located at the Duver Dinghy Park, SVYC concrete slipway and the Halland slipway.

Jimbo Mitchell - Rear Commodore (Sailing) SVYC

Jon Curtis - Sailing Director SVYC

**SEAVIEW RACE WEEK**  
**Monday 5<sup>th</sup> - Wednesday 7<sup>th</sup> August 2024**  
**NOTICE OF RACE**

<i>HIGH &amp; LOW WATER PORTSMOUTH (BST)</i>		
	HW	LW
Monday 5 <sup>th</sup> August	13:06 (4.5m)	06:04 (1.0m)
Tuesday 6 <sup>th</sup> August	13:45 (4.5m)	06:44 (0.9m)
Wednesday 7 <sup>th</sup> August	14:24 (4.5m)	07:19 (0.9m)

**ORGANISATION**

This event is part of the EWCC's Series. The Organising Authority will be SVYC.

**ELIGIBILITY & ENTRY**

Helms must be members of an affiliated RYA Club. The Entry Requirements on page 2 of this programme, which includes agreement to be bound by the "Risk Statement" in EWCC SI 22 and the "Privacy Statement" in EWCC SI 23 apply. There will be an entry fee which will be stated on the entry form.

**REGISTRATION & BRIEFING**

In addition to complying with the entry requirements, **entrants must enter the Regatta by filling out the online entry form at [svyc.org.uk/enter](https://svyc.org.uk/enter) before 23:59 on Sunday 4th August** (which will open one week before the event). Failure to do so will result in the boat not being recognised as racing. Where applicable, PY numbers must be included on the entry form.

**RULES & SAILING INSTRUCTIONS**

Event	Flag	Monday		Tuesday & Wednesday	
		R1	R2	R1	R2
Briefings at SVYC, BSC, BHYC		09:30			
Optimists & Teras	O	11:00	oc	10:00	oc
Cadet Slow Handicap	4	11:05	oc	10:05	oc
Cadet Fast Handicap	3	11:10	oc	10:10	oc
SVOD Class	W	11:20	n/a	10:20	11:20
ILCA Fleet	Laser Pennant	11:30	n/a	10:30	11:30
Mermaid Class	9	11:40	n/a	10:40	11:40

Races shall be governed by the World Sailing Racing Rules of Sailing 2021-2024. Races will be sailed under the East Wight Sailing Instructions, as varied by this Notice of Race. They can be downloaded from <https://www.ewcc.online>. An addendum to the Sailing Instructions will be issued no later than 24 hours before the briefing, detailing the courses to be used, and any other additional information that has not already been published.

Protests must be notified to the Race Officer immediately after each race. Protest forms must be lodged with the SVYC Office within 45 minutes of the completion of racing each day. Rule 44.1 is changed so that the Two-turns Penalty is replaced by a One-turn Penalty. EWCC SI 8.6 (passing through the starting line after starting) will not apply.

## **PROGRAMME OF EVENTS**

The programme of events shown above is provisional, with **provisional start times** shown for each class. Up to three races may be scheduled each day, with no warning signal made later than 1400 each day. A full schedule of races will be published in an SI addendum and will be available at the briefing. Cadet classes series' will be made up of 6 races, and Open classes series' will be made up of 5 races.

### **COURSES**

Racing will be from a Committee Boat, using both inflatable and fixed marks. The Racing Area and Course will be published in the Sailing Instruction Addendum A and issued at the briefing.

**SAILS & EQUIPMENT CHECKS** - Spot checks to establish conformity with Class Rules may be made at the direction of the Race Committee before, during or after the Regatta.

**SAFETY** - When the race committee considers that a boat or a competitor is in difficulty, it may instruct the boat or competitor to accept outside help, retire and sail ashore.

**VHF RADIO** - Except in an emergency, a boat shall not make voice or data transmissions, and shall not receive voice or data communications that is not available to all boats.

**SUPPORT BOATS** - are welcome but should not interfere with the racing unless required to rescue a boat in trouble.

**SCORING SYSTEM** - The Low Point Scoring System (RRS Appendix A) will apply. One discard will apply to all series' once 5 races have been sailed.

**RESULTS** - will be posted on the Notice Board at SVYC as soon as possible after the day's racing, and communicated via the relevant WhatsApp groups.

**PRIZES** - The timings for Prize Giving will be announced at the briefing.

**BOAT PARKING AND ACCESS** - boat parking is available in SVYC's Duver Dinghy Park, as well as a launching ramp. Further launching ramps are available on the SVYC Concrete Slipway and the Halland slipway.

Jimbo Mitchell - Rear Commodore (Sailing) SVYC      Jon Curtis - Sailing Director SVYC

# BEMBRIDGE SAILING CLUB REGATTA

Friday 9<sup>th</sup> and Saturday 10<sup>th</sup> August

## NOTICE OF RACE

<i>HIGH &amp; LOW WATER PORTSMOUTH (BST)</i>		
	HW	LW
Friday 9 <sup>th</sup> August	15:32 (4.4m)	08:18 (1.2m)
Saturday 10 <sup>th</sup> August	16:02 (4.3m)	08:46 (1.3m)

### ORGANISATION

This event is part of the East Wight Combined Clubs' Series. The Organising Authority will be BSC with race management assistance provided by SVYC and BHYC.

### ELIGIBILITY & ENTRY

Helms must be members of an affiliated RYA Club. The Entry Requirements on page 2 of this programme, which includes agreement to be bound by the "Risk Statement" in EWCC SI 22 and the "Privacy Statement" in EWCC SI 23, apply. There is no Entry Fee.

### REGISTRATION & BRIEFING

In addition to complying with the entry requirements, entrants in centreboard dinghies (incl multihulls) **must sign the Sign-On Sheet for their class at BSC, BHYC or SVYC at least 30 minutes before the scheduled race start time.** Failure to do so will result in the boat not being recognised as racing. PYs for entrants in Dinghy Class Races 3 & 6 **MUST** be entered on the appropriate Sign-On Sheet. There will not be a briefing. Entries in Race 1 (Handicap Cruisers) will require to have a YTC handicap certificate.

### RULES & SAILING INSTRUCTIONS

Races shall be governed by the World Sailing Racing Rules of Sailing 2021-2024, RYA Prescriptions, Class Rules, this Notice of Race and the Sailing Instructions. Races will be sailed under the East Wight Sailing Instructions, as varied by this Notice of Race. They can be downloaded from <https://www.ewcc.online>

Class flags are as shown below. Races will be started in accordance with RRS 26; however, for the *Keelboat Classes* there will be a 5 minute gap between the start of each Class and the warning for the next one - this modifies RRS 26. Rule 44.1 is changed so that the Two-turns Penalty is replaced by a One-turn Penalty.

### PROGRAMME OF EVENTS

<b>Keelboat Classes</b>				
Race	Class	Flag	Fri 9 <sup>th</sup> & Sat 10 <sup>th</sup> Aug (Start)	
1	Handicap Cruiser	2	14:20	
2	Redwing	R	14:30	
3	Seaview Mermaid	9	14:40	
4	Bembridge One Design	NN8	14:50	
5	National Squib & International Flying Fifteen	NN9	15:00	
<b>Dinghy Classes</b>				
Race	Class	Flag	Fri 9 <sup>th</sup> Aug (Start)	Sat 10 <sup>th</sup> Aug (Start)
1	International Optimist & RS Tera	O	14:30	15:00
2	Solent Scow	7	14:35	15:05
3	Dinghy Slow Handicap (PY 1240 and over)	4	14:40	15:10
4	ILCA 4 (4.7)	V	14:45	15:15
5	RS Feva	F	14:50	15:20
6	Dinghy Fast Handicap (under PY 1240)	3	14:55	15:25

## **CLASSES**

**Keelboat Classes** - races will start from a Committee Boat Starting Line positioned off St Helens Fort.

**Dinghy Classes** - Races will start from a Committee Boat located in the area between the entrance to Bembridge Harbour and either Garland or Priory Bay depending on the wind direction.

## **SAILS & EQUIPMENT CHECKS**

Spot checks to establish conformity with Class Rules may be made at the discretion of the Race Committee before, during or after the Regatta.

## **SUPPORT BOATS**

These are welcome but are governed by EWCC SI 18.1.

## **SCORING SYSTEM**

The Low Point Scoring System (RRS Appendix A) will apply for combined prizes.

## **RESULTS**

Results will be posted on the Notice Board at BSC (and e-mailed to BHYC & SVYC) as soon as possible after each day's racing.

## **PRIZES**

Prize giving (for dinghy & keelboat classes), to which all competitors are encouraged to attend, will be held at BSC at **18:00** hours on Saturday 10<sup>th</sup> August.

Race	<b>KEELBOAT CLASSES</b>	Friday 9 <sup>th</sup> Aug	Saturday 10 <sup>th</sup> Aug
1	Handicap Cruisers	A prize	A prize
2	Redwing	Percy Browne Cup	Evelyn Moreton Cup
3	Sea View Mermaid	A prize	A prize
4	Bembridge One Design	Chetwynd Trophy	QE II Coronation Cup
5	National Squib & International Flying Fifteen	A prize	A prize
Race	<b>DINGHY CLASSES</b>	Friday 9 <sup>th</sup> Aug	Saturday 10 <sup>th</sup> Aug
1	Optimist & RS Tera	A prize	A prize & Peel Cup ( <i>1<sup>st</sup> BSC Oppy both races</i> )
2	Solent Scow	Scow Salver	Bennett Cup
3	Dinghy Slow Handicap (PY 1240 and over)	A prize	A prize
4	ILCA 4 (4.7)	A prize	A prize & Astrop Cup ( <i>1<sup>st</sup> BSC both races</i> )
5	RS Feva	A prize	A prize
6	Dinghy Fast Handicap (Under PY 1240)	A prize	Davenport Cup (both races)

Alastair Speare-Cole  
Rear Commodore (Sailing) BSC

Laurence Blackburn  
Sailing Manager

# SEA VIEW YACHT CLUB REGATTA

Sunday 11<sup>th</sup> and Monday 12<sup>th</sup> August

## NOTICE OF RACE

<i>HIGH &amp; LOW WATER PORTSMOUTH (BST)</i>		
	HW	LW
Sunday 11 <sup>th</sup> August	16:35 (4.2m)	09:17 (1.4m)
Monday 12 <sup>th</sup> August	17:15 (4.1m)	09:56 (1.6m)

### ORGANISATION

This event is organised as part of the East Wight Combined Clubs' Series. The Organising Authority is SVYC.

### ELIGIBILITY & ENTRY

Helms must be members of an affiliated RYA Club. The Entry Requirements on page 2 of this programme, which includes agreement to be bound by the "Risk Statement" in EWCC SI 22 and the "Privacy Statement" in EWCC SI 23, apply. There is no Entry Fee.

### REGISTRATION & BRIEFING

In addition to complying with the entry requirements, entrants in all dinghy classes **must enter the Regatta by filling out the online entry form at <https://www.svyc.org.uk> no less than 60 minutes before the start of their race.** Entries for the Seaview Mermaid Class must be made on the SVYC website no later than 18:00 on Friday 9<sup>th</sup> August. Failure to do so will result in the boat not being recognised as racing. Visiting boats may sign on by VHF radio to 'Seaview Deck' no later than 20 minutes before their start. There will not be a briefing.

### RULES & SAILING INSTRUCTIONS

Races shall be governed by the World Sailing Racing Rules of Sailing 2021-2024. Races will be sailed under the East Wight Sailing Instructions (which can be downloaded from <https://www.ewcc.online>) as varied by this Notice of Race, Protest forms must be lodged with the Race Officer within 1 hour of the completion of the race. For all classes, the EWCC Sailing Instructions are varied in that RRS 44.1 is changed so that the Two-Turns Penalty is replaced by the One-Turn Penalty (a tack and a gybe), except in the SVOD Class for a breach of RRS 18.3 (changing tack at a windward mark) when a Two-Turns penalty applies. EWCC SI 8.5 (passing through the line after starting) does not apply.

### SVYC CLUB START/FINISH LINE

The **Orange starting line** is an extension of a line formed by bringing the SVYC flagstaff in line with an orange and white vertical marker board on the wall of the SVYC building. The Yellow Post is on an extension of this line. When starting, boats (except Cruisers & Foiling Boats) must pass between two yellow buoys marking the outer and inner limits of the line, for Cruisers & Foiling Boats the inner and outer limit marks will be inflatables placed on the seaward side of the Yellow Post. When code flag E is displayed at the warning signal the inner limit mark does not apply. If no starting line board is displayed, the Orange Starting Line will be used.



If a limit mark is lying on the pre-start side of the starting line, boats when starting shall leave on the required side both the limit mark and the point on the starting line nearest to the limit mark.

The Green starting line is a line formed between the SVYC flagstaff and a green-topped outer limit Inflatable mark. There will also be an inner limit inflatable mark laid approximately on the line unless Flag E is displayed at the Warning signal, when there will not be an inner limit mark.



The Club finishing line is an extension of a line formed by bringing the SVYC flagstaff in line with an orange and white vertical marker board on the wall of the SVYC building. The Yellow Post is on an extension of this line. When finishing, all Keelboat classes must pass between the two yellow buoys marking the outer and inner limits of the line; all Dinghy classes must pass between the SVYC flagstaff and the Yellow outer distance mark. All Cruisers & Foiling Boats must pass between the inner and outer limit marks which will be inflatables placed on the seaward side of the Yellow post. If a White 10 on a black background is displayed Number 10 buoy becomes the outer limit mark for the finish. If a Limit mark is lying beyond the Finishing line, boats when finishing shall leave on the required side both the Limit mark and the point on the finishing line nearest to the Limit mark.

**SHORTEN COURSE** - A race may be shortened from ashore when the Club Finishing line is a specified mark of the course. Shortened course will be signalled by displaying Flag S from ashore with two sound signals. In any race, the course may be shortened at a rounding mark. Boats should finish between the mark & the staff displaying Flag S.

### **COURSES**

The course to be sailed will be displayed no later than four minutes prior to the Warning signal. EWCC SI 8.5 (boats not to pass through the start/finish line) shall not apply. In addition to SI 8.1 the following marks are specified for use by the Race Committee. Big Ben Rock (17 - Red Can), Bunch (13 - Red Can), Quay Rocks (12 - Red Can), Old Fort (14 - Red Can). All keelboat classes must pass to seaward of the following after starting: Big Ben Rock (17 - Red Can), Bunch (13 - Red Can), Quay Rocks (12 - Red Can), Old Fort (14 - Red Can) and St Helen's Fort.

### **PROGRAMME OF EVENTS**

Race	Class	Flag	Start (both days)
1	SVOD (cadets)	W	09:30
2	Handicap Cruiser	2	10:20
3	Seaview Mermaid	9	10:30
4	National Squib & International Flying Fifteen	NN9	10:40
5	Cadet Squad (Optimists & Teras)	O	10:50
6	Drascombe Lugger	6	11:00
7	International ILCA Laser Handicap	1	11:20
8	Seaview Mermaid	9	12:00
9	Handicap Dinghy (over PY 1240)	4	12:10
10	Bembridge Redwing	R	12:20
11	Bembridge One-Design	NN8	12:30
12	RS Feva	7	14:10
13	Handicap Dinghy (under PY 1240)	3	14:20
14	Seaview Mermaids Handicap (Modern & Classic)	9	14:30
15	National Squib & International Flying Fifteen	NN9	14:40
16	Cadet Squad (Optimists & Teras)	O	14:50
17	Seaview Mermaid	9	16:10
18	SVOD Victory fleet	D	16:20
19	SVOD Amber fleet	W	16:30

### **SAILS & EQUIPMENT CHECKS**

Spot checks to establish conformity with Class Rules may be made at the direction of the Race Committee before, during or after the Regatta. All competitors in centreboard dinghies, small multihulls, and foiling boats, and those required to do so under class rules, shall wear adequate personal flotation devices at all times while afloat except briefly while changing or adjusting clothing or personal equipment. Support boats are governed by EWCC SI 18.1 at all times.

**SCORING SYSTEM & RESULTS** - The Low Point Scoring System (RRS Appendix A) will apply for combined prizes. Results will be posted on the Notice Board at SVYC as soon as possible after each race and will also be available at [www.halsail.com/result/club/1666](http://www.halsail.com/result/club/1666)

**PRIZES**

Prizes for first, second and third in each race, depending on the number of entrants, will be presented at a prizegiving to be held at the SVYC at **18:00** on Monday 12<sup>th</sup> August. All competitors are encouraged to attend.

	Class		Sunday	Monday
1	SVOD (Cadets)		Cade Cups - boys/girls	Dobbs Tankard
2	Handicap Cruiser		Handicap Cruiser Cup	Ian Gilchrist Salver
3	Seaview Mermaid		Bufs Cup	Bufs Tankard
4	National Squib & International Flying Fifteen		A prize	A prize
5	Cadet Squad (Optimists & Teras)		Simonds Cup (Leading Optimist combined both days)	
6	Drascombe Lugger		A prize	A prize
7	International ILCA Laser Handicap		Lakin Cup	Reynolds Cup
8	Seaview Mermaid		Bruce Donald Cup	Donald Bowl
9	Handicap Dinghy (PY>1240)		Weir Trophy	Jim St Clair-Ford Tankard
10	Bembridge Redwing		Bizarre Bowl	Baly Beach Bell
11	Bembridge One Design		Bullin Cup	Bullin Cup
12	RS Feva		Bottomley Cup (combined both days)	
13	Handicap Dinghy (PY<1240)		Almond Cup	Hunter Cup
14	Seaview Mermaid	Modern	John Scott-Hughes Bowl	Bufs Tankard
		Classic	Edwards Tankard	A prize
15	National Squib & International Flying Fifteen		A prize	A prize
16	Cadet Squad (Optimists & Teras)		A prize	A prize
17	Seaview Mermaid		Few Brown Salver	Pam Donald Memorial Trophy
18/ 19	SVOD	Victory fleet	Gordon Walker Salver	Victory Cup
		Amber fleet	Sir Edward Blount Cup	Sir Edward Blount Cup

In addition to the above prizes and trophies, the following trophies will be awarded:

Laser Pico	David Farquhar Cup (1 <sup>st</sup> in H'cap Dinghy PY>1240 race - Sunday)
	Brandt Cup (1 <sup>st</sup> in H'cap Dinghy PY>1240 race - Monday)
	Casey Cup (4 race series)
National Squib	The Squib Model (4 race series with 1 discard)
	Sallemanda Trophy (1 <sup>st</sup> SVYC boat for 6 race series with 1 discard over 4 days of BSC and SVYC regattas)

Jimbo Mitchell - Rear Commodore (Sailing) SVYC

Jon Curtis - Sailing Director SVYC

# EWCC J70 REGATTA

Saturday 17<sup>th</sup> & Sunday 18<sup>th</sup> August

## NOTICE OF RACE

<i>HIGH &amp; LOW WATER PORTSMOUTH (BST)</i>		
Date	HW	LW
Saturday 17 <sup>th</sup> August	10:44 (4.1m)	15:49 (1.7m)
Sunday 18 <sup>th</sup> August	11:25 (4.4m)	16:39 (1.8m)

### ORGANISATION

This event is part of the East Wight Combined Clubs' Series. The Organizing Authority will be BSC.

### ELIGIBILITY AND ENTRY

Helms must be members of an affiliated RYA Club. The Entry Requirements are set out on page 2 of this programme, which includes agreement to be bound by the "Risk Statement" in EWCC SI 22 and the "Privacy Statement" in EWCC SI 23 apply. Entry Forms are available from BSC. There is No entry fee.

### BRIEFING

There will be a briefing at BSC at 08:30 on Saturday 17<sup>th</sup> August.

### RULES & SAILING INSTRUCTIONS

Races shall be governed by the World Sailing Racing Rules of Sailing 2021-2024, RYA Prescriptions, Class Rules, this Notice of Race and the Sailing Instructions. Races will be sailed under the East Wight Sailing Instructions, as varied by this Notice of Race. They can be downloaded from <http://www.ewcc.online>

The Class flag will be M. Rule 44.1 is changed so that the Two-turns Penalty is replaced by a One-turn Penalty.

### PROGRAMME OF EVENTS (may vary depending on number of boats entered)

Date	Races	Start	Type	Notes
Saturday 17 <sup>th</sup> August	Races 1, 2, 3 & 5	11:00 & oc	Short	
	Races 4 & 6	oc	Long	
Sunday 18 <sup>th</sup> August	Race 7, 8 & 11	10:30	Short	
	Race 9 & 12	oc	Long	

**COURSES** - Races will be run to the east of St Helens Fort. The Courses will be as signaled on the stern of the Committee Boat.

**SAIL COMBINATIONS** – the following sail combinations will be applied:

Wind (Knots)	Main	Jib	Spinnaker	Notes
0 - 5	Full	Yes	Yes	
5 - 10	Full	Yes	Yes	
10 - 15	Full	Yes	RO Discretion	
15 - 20	1 Reef	Old	No	
20 +	No	No	No	Sailing cancelled at RO's discretion

**RADIO COMMUNICATIONS** - as per EWCC SI 20.1. A VHF radio shall be carried and on listening watch so that safety & race management information may be passed on Channel **77**.

**SUPPORT BOATS** - are welcome but governed by EWCC SI 18.1 unless required for rescue purposes.

**SCORING SYSTEM** - the Low Point Scoring System (RRS Appendix A) will apply. There will be one discard allowed if 5 or more races are sailed; two if 9 or more races are sailed and none if fewer than 5 are sailed.

**MOORING** - swinging moorings and related launch service will be available at Under Tyne & Seaview and will be based on entrant preference linked to their overnight accommodation. Arrangements for this will be published via the BSC website.

**RESULTS** - results will be announced during Prize giving and included in the post Regatta Report.

**PRIZES** - prize giving will take place on completion of racing on Sunday 18<sup>th</sup> August at BSC.

**SOCIAL PROGRAMME** - will be published separately via the BSC website.

Alastair Speare-Cole  
Rear Commodore (Sailing) BSC

Andrew Eddy  
BSC Co-ordinator

# BRADING HAVEN YACHT CLUB REGATTA

*(incorporating the Mermaid Gin Regatta)*

**Saturday 24<sup>th</sup> and Sunday 25<sup>th</sup> August**

## NOTICE OF RACE

<i>HIGH &amp; LOW WATER PORTSMOUTH (BST)</i>		
	HW	LW
Saturday 24 <sup>th</sup> August	15:52 (4.8m)	08:30 (0.6m)
Sunday 25 <sup>th</sup> August	16:43 (4.6m)	09:14 (1.0m)

### **ORGANISATION**

This event is part of the East Wight Combined Clubs' Series. The Organising Authority will be BHYC with race management assistance provided by BSC for the Keelboat Class events.

### **ELIGIBILITY & ENTRY**

Helms must be members of an affiliated RYA Club. The Entry Requirements on page 2 of this programme, which includes agreement to be bound by the "Risk Statement" in EWCC SI 22 and the "Privacy Statement" in EWCC SI 23 apply. There is no Entry Fee.

### **REGISTRATION & BRIEFING**

In addition to complying with the entry requirements, **entrants in centreboard dinghies (incl small multihulls) must sign the Sign-On Sheet for their class at BHYC, BSC or SVYC at least 30 minutes before the scheduled race start time.** Failure to do so will result in the boat not being recognised as racing. PYs **MUST** be entered on the appropriate Sign-On Sheet. There will not be a briefing.

### **RULES & SAILING INSTRUCTIONS**

Races shall be governed by the World Sailing Racing Rules of Sailing 2021-2024, RYA Prescriptions, Class Rules, this Notice of Race and the Sailing Instructions. Races will be sailed under the East Wight Sailing Instructions, as varied by this Notice of Race. They can be downloaded from <https://www.ewcc.online>

Class flags are as shown below. Races will be started in accordance with RRS 26; however, there will be a 5 minute gap between the start of each Keelboat Class and the warning for the next one - this modifies RRS 26. Rule 44.1 is changed so that the Two-turns Penalty is replaced by a One-turn Penalty.

<b>DINGHY CLASSES</b>				
Race	Class	Flag	Sat (Start)	Sun (Start)
1	Dinghy Fast Handicap (under PY 1240) incl ILCAs & Flying 15s	3	15:00	15:30
2	RS Feva	F	15:05	15:35
3	Dinghy Slow Handicap (PY 1240 and over)	4	15:10	15:40
4	Solent Scow	7	15:15	15:45
5	Optimist & RS Tera	O	15:20	15:50
6	Swan	Z	15:25	15:55
<b>KEELBOAT CLASSES</b>				
Race	Class	Flag	Sat (24 <sup>th</sup> ) & Sun (25 <sup>th</sup> ) (Start)	
1	Bembridge Redwing	R	14:30	
2	Bembridge One Design	NN8	14:40	
3	International Flying Fifteen	NN9	14:50	
4	Seaview Mermaid	9	15:00	

## **COURSES**

**Keelboat Classes** - Races will start from the BSC Committee Boat Starting Line positioned off St Helens Fort.

**Dinghy Classes** - Races will start from a Committee Boat located in the area between the entrance to Bembridge Harbour and either Garland or Priory Bay depending on the wind direction.

## **SAILS & EQUIPMENT CHECKS**

Spot checks to establish conformity with Class Rules may be made at the direction of the Race Committee before, during or after the Regatta.

## **SUPPORT BOATS**

These are welcome but are governed by EWCC SI 18.1 unless required to rescue a boat in trouble.

## **SCORING SYSTEM**

The Low Point Scoring System (RRS Appendix A) will apply for combined prizes.

## **RESULTS**

Results will be posted on the Notice Board at BHYC as soon as possible after each day's racing.

## **PRIZES**

Prize giving will be held at BHYC at 18:00 hours on Sunday 25<sup>th</sup> August. All competitors are encouraged to attend. Prizes for the keelboat classes will be distributed through Clubs.

## **INSHORE CLASSES**

Race	Class	Saturday	Sunday
1	Dinghy Fast Handicap (under PY 1240) incl Lasers	Ted Eyre-Williams Cup A prize for the 1 <sup>st</sup> Laser	Whitehead Cup A prize for the 1 <sup>st</sup> Laser
2	RS Feva	tbc	tbc
3	Dinghy Slow Handicap (PY 1240 and over)	Seawych Jubilee Cup	Hilson Cup
4	Solent Scow Wooden Scow	BHYC Scow Regatta Cup Gabbani Woody Cup	Commodore's Scow Cup
5	Optimist & RS Tera	Mander Cup	H Dyer Cup
6	Swan	Vivian Lloyd Regatta Cup	AA Coombes Designer Cup

## **KEELBOAT CLASSES**

Race	Class	Saturday	Sunday
1	Bembridge Redwing	A prize	Loch-Nell Trophy (both days)
2	Bembridge One Design	Selwyn Cup	Hector Humphray Cup
3	International Flying Fifteen	A prize	A prize
4	Seaview Mermaid	A prize	A prize

Chris Wilkinson  
Rear Commodore (Offshore) BHYC

Alastair Speare-Cole  
Rear Commodore (Sailing) BSC

# ROYAL VICTORIA YACHT CLUB REGATTA

Sunday 29<sup>th</sup> September

## NOTICE OF RACE

<i>HIGH &amp; LOW WATER PORTSMOUTH (BST)</i>	<i>LW</i>	<i>HW</i>	<i>LW</i>
Sunday 29 <sup>th</sup> September	03:10 (1.7m)	11:18 (4.3m)	15:37 (1.7m)

### **ORGANISATION**

This event is part of the EWCC Regatta Series. The organising authority will be RVYC.

### **ELIGIBILITY AND ENTRY**

Entry is open to Cruisers (multihull and monohull), which will be dual scored using MOCRA and YTC ratings and handicaps, Dayboats and Dinghies. Helms must be members of RYA affiliated clubs. The Entry Requirements on page 2 of this programme, which includes agreement to be bound by the "Risk Statement" in EWCC SI 22 and the "Privacy Statement" in EWCC SI 23, apply.

### **RULES**

Racing will be governed by the rules defined in the 2021-2024 World Sailing Racing Rules of Sailing (RRS), RYA Prescriptions, Class Rules, RVYC Race Chart 2024 and this Notice of Race (except where modified by the RVYC Merrydown 2024 SIs) and the RVYC Merrydown Regatta 2024 Sailing Instructions which replace the EWCC Regatta Series 2024 Sailing Instructions. In a case of conflict, the RVYC Merrydown 2024 SIs will apply. The RVYC Merrydown 2024 SIs will be available by 1 September 2024 from the RVYC website or office.

### **PROGRAMME OF EVENTS**

Sunday      09:30    Briefing  
                  11:00    first race start not before

Each day, there will be one long race for Cruiser classes and a maximum of three short races for other classes including Scows. The details of classes will be set out in the RVYC Merrydown 2024 SIs.

### **COURSES**

Racing (except for Scows which will race in Wootton Creek) will be started and finished at the RVYC Race Box to the west of Wootton Creek or from a Committee Boat. Courses will be in the Eastern Solent in accordance with the RVYC Race Chart 2024

### **RESULTS AND PRIZES**

Results will be published on the RVYC website and on the Regatta Notice Board as soon as possible. Prizegiving will be held as soon as possible after the results have been finalised on Sunday 29<sup>th</sup> September.

### **INSURANCE**

Each participating boat shall be insured with valid third-party liability insurance with a minimum cover of £2,000,000.

For further information, please check <https://www.rvyc.org.uk/open-events/regattas> or contact the RVYC on 01983 882325 or email [office@rvyc.org.uk](mailto:office@rvyc.org.uk)

Jane Barrett Bellingham - Vice Commodore RVYC

## **EWCC SAILING INSTRUCTIONS 2024**

### **1 RULES**

- 1.1 Except where amended by these Sailing Instructions (SIs), all races will be governed by the rules as defined in the current Racing Rules of Sailing 2021-2024.
- 1.2 When sailing in the deep water channel boats are required to give way to large vessels (commercial & naval) proceeding either to and from the ports of Portsmouth and Southampton or the anchorage at St Helen's Roads.
- 1.3 Each boat sailing in a Class or under the Handicap for that Class shall comply with its Class Rules, which will take precedence. All boats must carry the minimum buoyancy required under their Class Rules (or as built, in the absence of any specific Class Rule).
- 1.4 For all competitors an adequate personal flotation device shall be carried on board, and these shall be worn at all times while afloat, except briefly while changing or adjusting clothing or personal equipment, if
  - (i) they are competing in centreboard dinghies, or small multihulls or
  - (ii) they are under 18 in any class, or
  - (iii) class rules require it, or
  - (iv) flag Y is displayed ashore or from the committee boat;This changes RRS 40.  
An adequate flotation device is a life-jacket or buoyancy aid to a minimum of 50 Newtons EN393/ISO12402-5, or 100 Newtons for weak swimmers or non-swimmers.
- 1.5 Racing rules will be changed as follow.
  - Part 4 pre-amble and RRS 40 in SI 1.4 (wearing of personal buoyancy)
  - Definition of AP (SI 4.2 displayed ashore - one hour's notice after removal)
  - RRS 27.1 in SI 8.1 (course to be displayed prior to the Preparatory signal)
  - RRS 31 & 44.1 in SI 13.1 (penalties)
  - RRS 33 in SI 11.1 & 11.2 (course changes)
  - RRS 35 in SI 14 (time limit for handicap races)
  - RRS 37 in SI 20.2 (Flag D in lieu of Flag V)
  - RRS 61.1 (protest notification for boats under 6 metres)
  - RRS 62.1 in SI 10.5 (notification of OCS)
  - RRS 66 (re-opening hearing on last day of a regatta)
- 1.6 In races for Handicap Cruisers the handicap will be as set out in the Entry Requirements on Page 2. In races for handicap dinghies, the Portsmouth Yardstick of the boat, as amended by the organising Club(s) will be used.

### **2 NOTICES TO COMPETITORS**

- 2.1 Notices to competitors will be posted on the official notice board located at the organising Club(s).

### **3 CHANGES TO SAILING INSTRUCTIONS**

- 3.1 Changes to the SIs made prior to 3 hours before the scheduled starting time of a race will be posted in accordance with SI 2.1 except that any change in the schedule of the races will be posted by 18:00 on the day before it will take place. Changes made less than 3 hours before the scheduled starting time of a race started from a Committee Boat will be written on a board displayed on the Committee Boat and indicated by displaying flag 2<sup>nd</sup> Substitute with two sounds.

### **4 SIGNALS MADE FROM ASHORE**

- 4.1. Signals made from ashore will be flown from the flagstaff of the organising Club(s).
- 4.2. Code Flag AP flown from the flagstaff of the organizing Club(s) with two sound signals means the race is postponed. The Warning Signal for any subsequent Committee Boat starts will be made not less than one hour after the AP is lowered with one sound signal (This changes Flag AP).



## 5 SCHEDULE OF RACES

5.1 The schedule of races is as given in the Notice of Race.

## 6 CLASS FLAGS

6.1 Class Flags will be as in the Notice of Race.

## 7 RACING AREA

7.1 The racing area will be in the Eastern Solent (see EWCC chart on the cover of this Programme or RVYC chart).

## 8 THE COURSE

8.1 The Course to be sailed will be displayed by letters, numbers or symbols listed with these SIs no later than the Preparatory Signal. This changes RRS 27.1

8.2 A RED or ORANGE Background to the letter, number or symbol indicates that the buoy shall be rounded to PORT. A GREEN background to the letter, number or symbol indicates that the buoy shall be rounded to STARBOARD. If a board and markers is used then all marks shall be rounded to STARBOARD unless UNDERLINED when they shall be rounded to PORT.

8.3 If two DIAMONDS are displayed on the Course Board, the sequence before the diamonds shall be sailed twice before continuing to the marks displayed after the diamonds. If three DIAMONDS are displayed on the Course Board, the sequence before the diamonds shall be sailed thrice before continuing to the marks displayed after the diamonds.

8.4 When a BLACK AND ORANGE CHEQUERED board is displayed in the Course, the mark(s) preceding this board will be rounded before rounding the marks displayed after the chequered board for the number of times indicated.

8.5 **For all races starting and/or finishing from a Committee Vessel.** Whilst the Orange or Blue or S flag is displayed, and except during their own class's starting sequence or when finishing, no boat shall pass in either direction through the committee vessel start line after rounding the first mark of their course or the committee vessel finish line.

8.6 The above rule does not apply to a finish line if course board £ is displayed as the last mark of the course or round.

## 8.7 SPECIAL COURSES

8.7.1 **Special Course 1** will be a windward/leeward course with a wing mark as described in Appendix 1.1. This will be signalled from the committee boat by displaying a course board with a 1 on it followed by the marks to be rounded in accordance with Appendix 2.

8.7.2 **Special Courses 2, 3 & 4** will be a trapezoid course as shown in Appendix 1.2. These will be signalled from the committee boat by displaying a course board with a 2, 3 or 4 on it. Inflatable marks will be used.

8.7.3. **Special Course 5** will be a windward/leeward course with a leeward finish as shown in Appendix 1.3. This will be signalled from the committee boat by displaying a course board with a 5 on it. The number of rounds to be sailed will be indicated by the number of diamonds displayed on a course board. If a windward spreader, a leeward spreader and/or a leeward gate is to be used, this will be signalled from the Committee boat in accordance with Appendix 2.

8.7.4. **Special Course 6** will be a windward/leeward course with a windward finish as shown in Appendix 1.3. This will be signalled from the committee boat by displaying a course board with a 6 on it. The number of rounds to be sailed will be indicated by the number of diamonds displayed on a course board. If a windward spreader, a leeward spreader and/or a leeward gate is to be used, this will be signalled from the Committee boat in accordance with Appendix 2.

8.7.5 For Special Courses 1, 5 & 6, the start and finish lines may be placed at any point between the windward and leeward marks shown in the diagrams in Appendices 1.1 & 1.3.

## 9 **MARKS**

- 9.1 Marks of the Course will be either inflatable moveable buoys, or navigation buoys or marks permanently laid as shown on the chart of the area reproduced on the cover of this programme and listed in Appendix 2. The Finishing Mark is described in SI 12.

## 10 **THE START**

- 10.1 Races will be started in accordance with RRS 26 (unless varied in the Notice of Race).
- 10.2 The Orange Flag may be displayed (with one sound signal) 5 minutes before the warning signal of the first race. It will be removed when all starters have crossed the starting line.-
- 10.3 Boats whose Warning Signal has not been made shall keep clear of the starting area.
- 10.4. A boat shall not start later than 4 minutes after her starting signal for a 5 minute starting sequence or 9 minutes after her starting signal for a 10 minute starting sequence.
- 10.5 If any part of a boat's hull is on the course side of the starting line at her starting signal and she is identified, the race committee will attempt to hail her sail number. Failure to hail her number, failure of her to hear such a hail, or the order in which boats are hailed will not be grounds for a redress for request. This changes RRS 62.1(a).

### **COMMITTEE BOAT STARTING LINE**

- 10.6 Unless otherwise indicated in the Notice of Race, a Committee Boat Starting Line will be used.
- 10.7 The Committee Boat Starting Line will be between a staff displaying an Orange Flag on the Committee Boat at the starboard end, and the Course side of the starting mark at the port end.
- 10.8 A RIB or inflatable buoy may be attached to the Committee Boat.
- 10.9 The Committee Boat may hold position by using engines.

## 11 **CHANGES OF COURSE AFTER THE START**

- 11.1 A change of course after the start will be signaled before the leading boat has begun the leg, although the new mark may not then be in position. Code Flag C will be flown and either the new Course to be sailed from the mark where it is displayed or the approximate compass bearing to the new mark (or a red rectangle for a change to port or a green triangle for a change to starboard) and a + or – sign to indicate the lengthening or shortening of a leg. This changes RRS 33. A periodic Sound Signal will be made. Any mark to be rounded after rounding the new mark may be relocated to maintain the original Course configuration without further signals. When in a subsequent change of Course a new mark is replaced, it will be replaced with the original mark.
- 11.2 Minor mark moves (up to approximately 100 metres) may be made without signalling the change. This changes RRS 33.

## 12 **FINISH**

- 12.1 Unless otherwise indicated in the Course instructions, the Finishing Line will be between the mast or staff displaying a BLUE flag on the Finishing Committee Boat and the Course side of the Finishing Mark. Except in the case of Special Courses 1, 2 & 3 the Finishing Mark is the last mark of the Course shown, or for a shortened Course the adjacent rounding mark. When the last mark of a course or round is displayed using Course Board £, boats must pass through the finishing line at the end of each round. The S Flag will be substituted for the BLUE Flag if the Course is shortened.
- 12.2 The Finishing Committee Boat may be held position by using engines.

## 13 **PENALTY SYSTEM**

- 13.1 Unless otherwise indicated in the Notice of Race or disallowed under Class Rules, RRS 31 (touching a mark - a one-turn penalty to include one tack & one gybe) and 44.1 (breaking a Part 2 Rule - a two-turn penalty to include two tacks & two gybes) apply.

## 14 **TIME LIMIT**

- 14.1 Unless modified in the NoR, the time limit for any Class will be 3 hours after the actual start of that Class.

14.2 Boats failing to finish within the time limit or 30 minutes (60 minutes for handicap cruisers & MOCRA) after the first boat sails the course and finishes whichever is later will be scored DNF without a hearing. This changes RRS 35, A5.1 and A5.2.

14.3 Should no boat finish within the Time Limit, the result of the race for that class may be determined from a previously recorded time for all boats (taken at the finishing line or rounding mark). This changes RRS 35, A5.1 and A5.2.

## 15 **PROTESTS**

15.1 RRS 61.1 applies with the following change; boats under 6m which are not required to display a Red Protest Flag but shall inform the Race Officer immediately after finishing that they wish to bring a protest. Protests must be submitted in writing within the time limits set out in RRS 61.3. Advisory Hearings and/or the RYA Arbitration Procedure may be available in accordance with the protocol available at the organising Club(s).

15.2 The Jury will hear protests in approximately the order of receipt as soon as possible.

15.3 Protest notices will be posted within 30 minutes of the protest time limit to inform competitors where and when there is a hearing in which they are parties to a hearing or named as witnesses.

15.4 RRS 66.2(a)(2) is changed to 60 minutes.

## 16 **SCORING**

16.1 RRS Appendix A, the low point scoring system will apply, unless the Class Rules state otherwise.

## 17 **OFFICIAL BOATS**

17.1 Craft owned by the organising clubs will normally be used; if private craft are used they will identify themselves to competitors.

## 18 **SUPPORT BOATS**

18.1 Unless providing help to any person or vessel in danger (RRS 1.1), team leaders, coaches and other support personnel shall not be in the racing area from the time of the Preparatory Signal for the first Class to start until all boats have finished or the Race Committee signals a postponement, general recall or abandonment. The penalty for failing to comply with this requirement will be the disqualification of all boats associated with the support personnel involved.

## 19 **TRASH**

19.1 Trash may be placed aboard support or official boats.

19.2 The penalty for breaking RRS 47, Trash Disposal, is at the discretion of the protest committee (DPC) and may be less than disqualification.

## 20 **RADIOS AND MOBILE PHONES**

20.1 The use of VHF radio or mobile phones to gain information that may assist a boat to improve its position is not allowed. However unless modified in the NoR, all keelboat, cruisers & cruising multihulls shall carry a VHF radio & listen on Channel 77 so that safety & race management information may be passed. Failure to receive this information shall not be grounds for redress. This changes RRS 62.1a. A back-up mobile phone on board for use in an emergency is strongly recommended. In the event of Ch 77 being unworkable, Ch 72 will be used.

20.2 RRS 37 (search & rescue instructions) is modified and Flag D with one sound signal will be used instead of Flag V.

20.3 Use of the code word "Code Red" may be used to signify an emergency during racing; until cancelled by the controlling station, radio silence should be observed by those not involved in the emergency. The name of the Club should also be used in the initial transmission.

## 21 **DECLARATIONS, RETIREMENTS, RESULTS & PRIZES**

21.1 Any boat, which crosses the Finishing Line and does NOT signify EITHER that she has retired OR that she is protesting in accordance with RRS 61.1(a) shall be deemed to have

completed the race in accordance with the Sailing Instructions. Declarations are NOT required.

- 21.2 Boats retiring shall report their retirement to the organising Club at the earliest opportunity: BSC (01983 872237) - SVYC (01983 613268) - BHYC (01983 872289) - RVYC (01983 882325)
- 21.3 Results will be posted on the official Notice Board of the organising Club(s) & their websites.
- 21.4 Prize details are given in the Notice of Race.

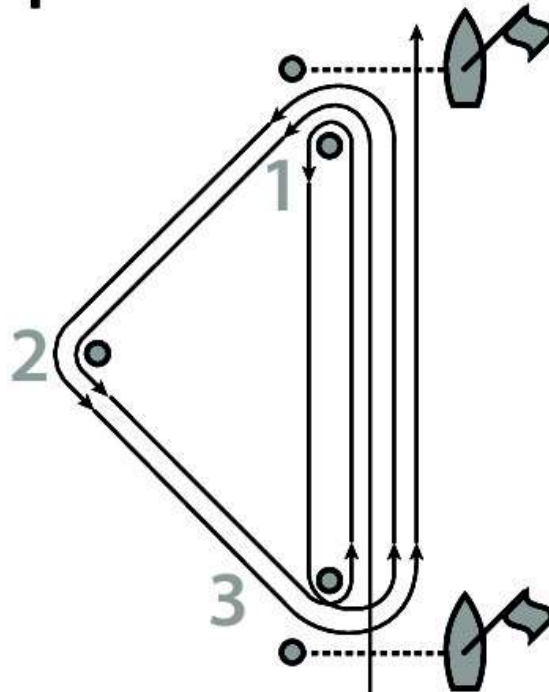
## 22 **RISK STATEMENT**

- 22.1 Rule 3 of the Racing Rules of Sailing states: "The responsibility for a boat's decision to participate in a race or to continue racing is hers alone."
- 22.2 Sailing is by its nature an unpredictable sport and therefore inherently involves an element of risk. By taking part in the event, each competitor agrees and acknowledges that:
  - a. They are aware of the inherent element of risk involved in the sport and accept responsibility for the exposure of themselves, their crew and their boat to such inherent risk whilst taking part in the event;
  - b. They are responsible for the safety of themselves, their crew, their boat and their other property whether afloat or ashore;
  - c. They accept responsibility for any injury, damage or loss to the extent caused by their own actions or omissions;
  - d. Their boat is in good order, equipped to sail in the event and they are fit to participate;
  - e. The provision of a race management team, patrol boats, and other officials and volunteers by the event organiser does not relieve them of their own responsibilities;
  - f. The provision of patrol boat cover is limited to such assistance, particularly in extreme weather conditions, as can be practically provided in the circumstances;
  - g. It is their responsibility to familiarise themselves with any risks specific to this venue or this event drawn to their attention in any rules and information produced for the venue or event and to attend any safety briefing held for the event;
  - h. Their boat is adequately insured, with cover of at least £3 million against third party claims.

## 23. **PRIVACY STATEMENT**

- 23.1 The personal information you provide to the organising authority will be used to facilitate your participation in the event. If you have agreed to be bound by the Racing Rules of Sailing and the other rules that govern the event (the rules), the legal basis for processing that personal information is contract. If you are not bound by the rules, the legal basis for processing that personal information is legitimate interest. Your personal information will be stored and used in accordance with the organizing authority's privacy policy. When required by the rules, personal information may be shared with the RYA, your national authority and/or World Sailing. The results of the event and the outcome of any hearing or appeal may be published.

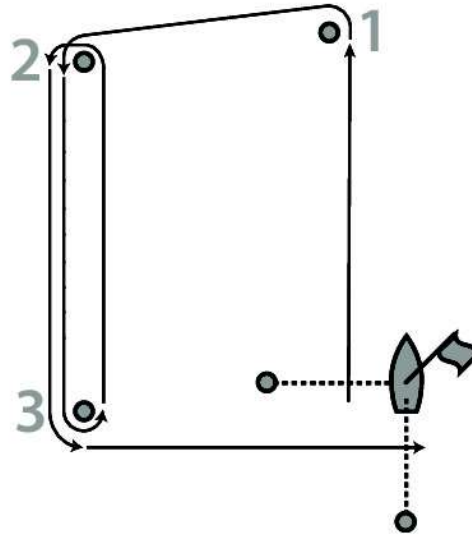
# Special Course 1



Start -1-2-3-1-3-1-2-3-Finish

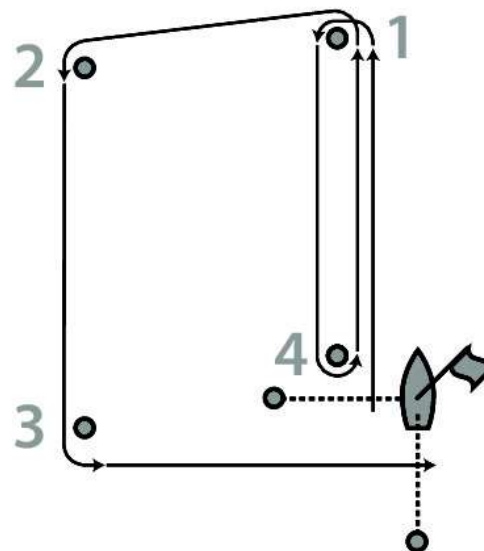
*The Finish Committee Boat may be positioned between Marks 1 & 2.*

## Special Course 2



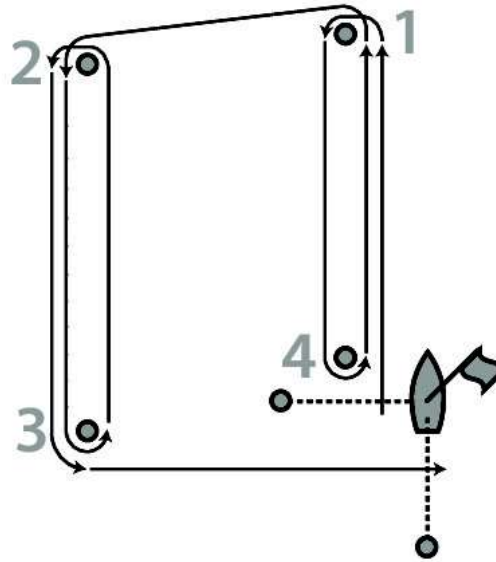
Start -1-2-3-2-3-Finish

## Special Course 3



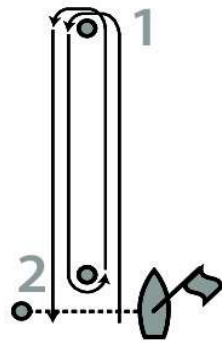
Start -1-4-1-2-3-Finish

# Special Course 4



Start -1-4-1-2-3-2-3-Finish

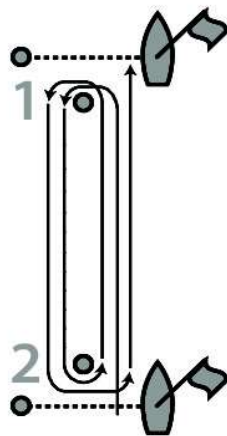
## Special Course 5



1 Round: Start -1-Finish

2 Rounds: Start -1-2-1- 2-Finish

## Special Course 6



1 Round: Start -1-2-Finish

2 Rounds: Start -1-2-1- 2-Finish

*The Start & Finish Committee boat may be positioned in the middle of the upwind leg*

*In the event of there being a leeward gate, boats must pass through it on the way to the finish line*

*Number of rounds indicated by the number of diamonds on a course board. The following course boards may also be used:*

**+W = Windward spreader**

**+L = Leeward spreader**

**+G = Leeward gate**

*The Start & Finish Committee boat may be positioned in the middle of the upwind leg*

*In the event of there being a windward gate, boats must pass through it on the way to the finish line*



**APPENDIX 2**

<b>EWCC RACING MARKS WITH ALLOTTED LETTERS, NUMBERS AND SYMBOLS</b>		
A	ACLAND	Yellow Spherical/N Cone
B	BRITTEN	Yellow Spherical/Black Vertical Line
C	COCHRANE	Yellow Spherical
D	DRUMHEAD	Yellow Spherical
E	UNDER TYNE	Yellow Spherical
F	FITZWILLIAM	Yellow Spherical
G	GARLAND	Yellow Spherical with White Band
H	BRADING HAVEN TURNING MARK	Yellow Dan Buoy
I	NAB EAST	Red Channel Buoy
J	JONAH	Yellow Inflatable - Violet Top
JJ	JANSON (ex-PATCH)	Yellow Spherical with Black Band
jh	JENNY HUNTER	Yellow Spherical
K	DERRICK	Yellow Spherical with Orange Band
L	SEA VIEW LINE	Yellow Post
M	MORETON	Yellow Spherical with Orange Band
N	NAINBY LUXMOORE	Yellow Spherical
O	OLD CHURCH	Yellow Top Hat Buoy
Q	St HELENS	Red Channel Buoy
R	RUTHVEN	Yellow Spherical
S	LOLLIPOP	Yellow Inflatable - Yellow Top
T	TARA	Yellow Spherical
U	SOMERS	Yellow Spherical
V	BEMBRIDGE LEDGE	Yellow/Black East Cardinal
W	WRECK	Yellow Spherical
X	WARNER	Red Pillar Buoy
Y	FOOTPRINT	Yellow Top Hat Buoy
Z	NAB END	Red Pillar Buoy
!	NAB TOWER	Nab Tower
2	BRUCE	Yellow Inflatable - Orange Top
3	BERTIE	Yellow Spherical
4	PIERHEAD	Yellow Inflatable - Black Top
6	BROOKIE	Yellow Inflatable - Light Green Top
7	OUTER MARK	Yellow Spherical
8	LITTLE DEB	Yellow Inflatable - Mid-Blue Top
9	GORDON	Red Can
11	OLD 'O'	Yellow Top Hat Buoy
15	BOOM	Yellow Inflatable - Red Top
16	MAUDSLAY	Yellow Top Hat Buoy
@	BOB	Red Dan Buoy
	BUNNY	Yellow Inflatable - Pink Top
ILM(10)	SVYC INNER LINE (Orange Start)	Orange Dan Buoy
	SPENCE WILLARD	Yellow Top Hat Buoy
#	PEPE	Yellow Top Hat Buoy
†	BEMBRIDGE TIDE GAUGE	
▲	INFLATABLE MARK TO WINDWARD [OPTIONAL 2 ↘s FOR A DISTANT MARK]	
▼	INFLATABLE MARK TO LEEWARD [OPTIONAL 2 - s FOR A DISTANT MARK]	
◀▶	INFLATABLE WING MARK	
+	<b>LAID OUTER LIMIT MARK (COMMITTEE BOAT START/FINISH)</b>	
£	<b>BOATS MUST GO THROUGH THE FINISH LINE ON EACH ROUND</b>	
+W	<b>WINDWARD SPREADER MARK (Special Courses 5 &amp; 6)</b>	
+L	<b>LEEWARD SPREADER MARK (Special Courses 5 &amp; 6)</b>	
+G	<b>GATE MARK (Special Courses 5 &amp; 6)</b>	